



### Liz Hicks

With this project, I really wanted to highlight the “Direct Cut” feature of ScanNCut. With “Direct Cut,” you can scan in your surface and cut a design directly from the pattern of your surface, or you can cut a portion of your surface with a built-in design.

#### MATERIALS:

Brother™ ScanNCut, patterned paper with intricate designs (I used paper from Graphic 45), standard mat 12" x 12" (CAMATF12), clear overlay, double-sided adhesive, fabric, book print, sewing pattern paper, patterned scrapbook paper, different textures and sizes of flowers, metal findings, lace, ribbon

#### step 1.

To start, pick out patterned paper that has intricate designs.

#### step 2.

Take your paper and place it on your standard mat (CAMATF12). From here, we are going to use the “Direct Cut” function, but we are going to use a technique that will help the machine recognize your image.



#### step 3.

To do this, take your clear overlay and use double-sided adhesive to adhere it to the top of your mat.

**step 4.** Now, use a dry-erase marker to outline the image you would like to cut out of your paper. Make sure that your outline lies within your image and is not on the outside. The machine will read the outer edges of your design, so you want your outline to lie within the design of your paper.



**step 5.** Once your design is outlined, take a white piece of paper and place it under your overlay and on top of your paper. This will create a sandwich of materials.



**step 6.** Next, feed your mat in *backwards* into your machine. You will do this so that when your mat is done scanning, you can easily remove your overlay and white paper.



**step 7.** Now, select "Direct Cut" and proceed to scan in your media.

- step 8.** Once your design is scanned in, remove your overlay and white paper and continue with the “Direct Cut” function. This will now cut your design out of the surface.



- step 9.** To create your project, layer different media and materials onto your paper. (I used fabric, book print, sewing pattern paper and patterned scrapbook paper.) This will create your background.



- step 10.** To create your flower arrangement, use different textures and sizes of flowers as well as metal findings.



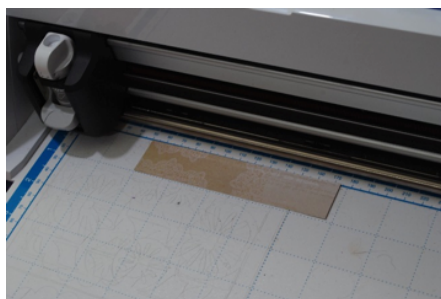


**step 11.** Layer different lace and ribbon below for added texture.

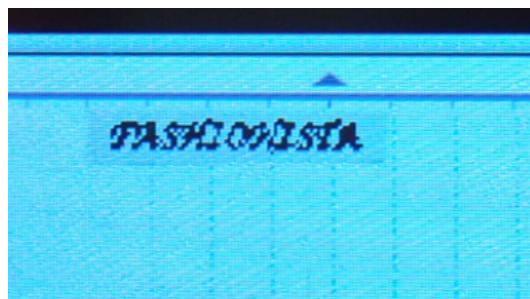


**step 12.** For your title, take a piece of scrap paper and place it onto your mat. Use the “Background Scan” function of ScanNCut to scan in your scrap.

Before Scan:



After scanned in, with title on screen:



**step 13.** Next, take your pen housing and load your pen into the housing and into the machine.



**step 14.** Next, select “Draw” and your title will print on your scrap as seen below.



**step 15.** Next, adhere your title to your project.



**step 16.** Layer different textures with your title to create this cute cluster.  
(I used a sewing pattern and burlap here).

**step 17.** Finish by adhering your dress form cut, backed with some glittered tulle, as seen here.



**step 18.** Add some sewing detail in a straight and zigzag stitch, which will accent your layout as well as help to secure any elements that need it.



**step 19.** Once finished, add your picture and your layout is done!

Using "Direct Cut" is a great way to use the beautiful designs of your papers easily... no need for scissors or fussy cutting.

